

**mini XD WiFi iWCam**



**Surveillance cam**

**MANUAL**

# Index

## 1-App functions

03) iWFcam functions

## 2-Search

04) Network search

## 3-Network configuration

05) Automatic connection

06) Manual connection 01

07) Manual connection 02

08) Manual connection 03

09) Manual connection 04

10) Scanning QR code

11) Password change

12) Local network connection

## 4-Camera functions

13) Connection

14) Icons

## 5-Files

15) Local storage

16) SD card storage

17) Local image storage

## 6-Settings

18) Alarm

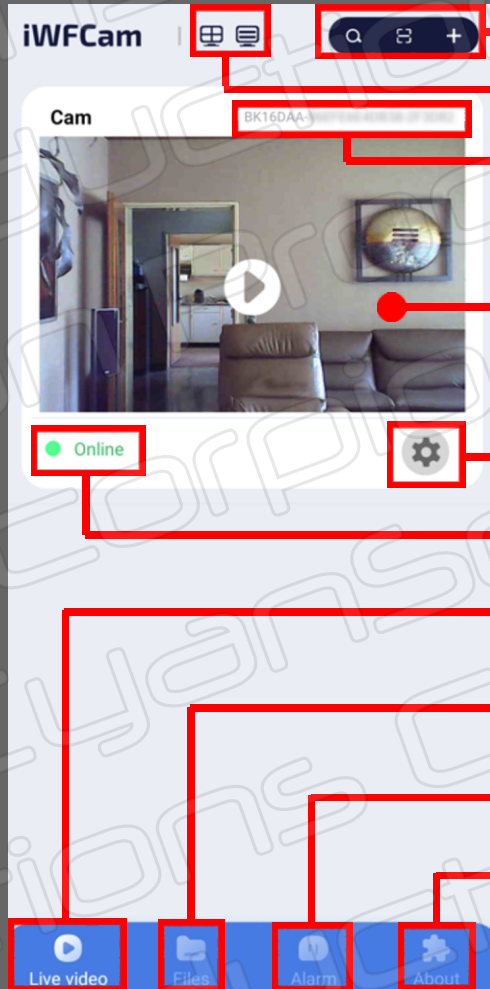
19) SD card config

20) Time, Misc and System

21) WiFi, IR-LEDs and Cloud

22) Password, Reboot

# 01- Main Window



Search device / Scan QR-Code / Setup camera WiFi

Display for multiple devices / Sort devices

Camera ID

Main video Window

Change settings / Configure settings

Camera status

Live video feed

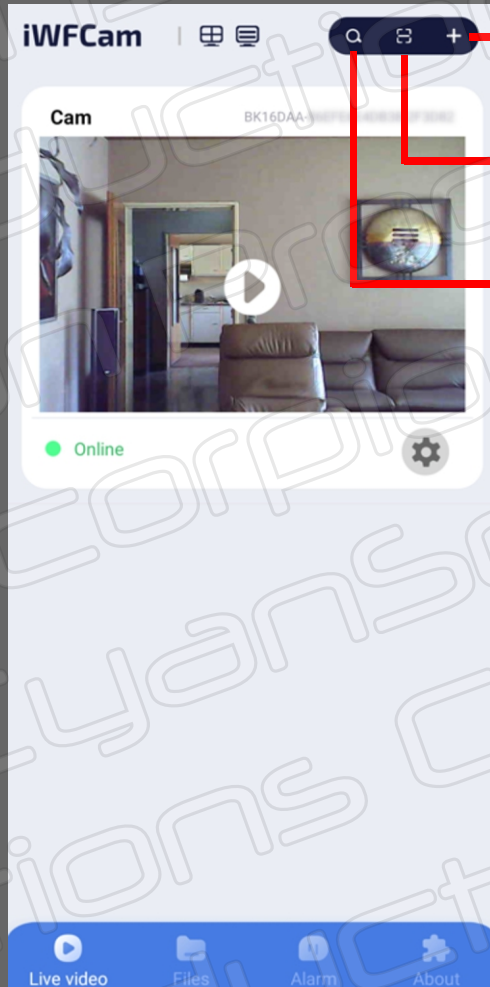
Recorded files

Alarm screenshots

About the iWFCam app



## 02 - Search (Network)



Manual network  
setup



Scan camera  
QR code

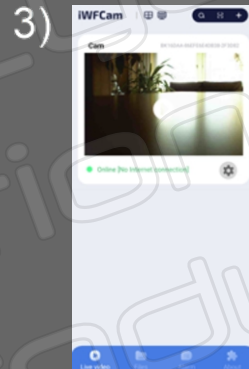
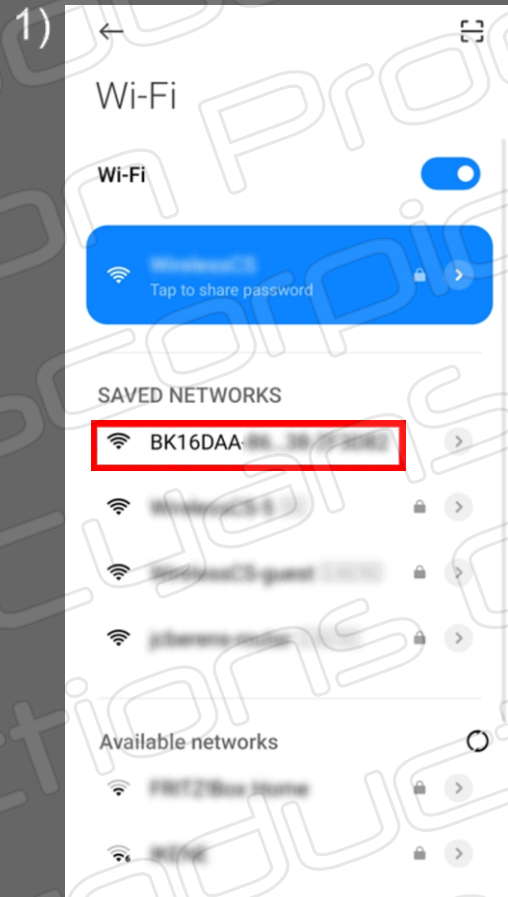


Active cameras



# 03 - Camera network - Automatic connection

Normally, as soon as the camera is powered on, the camera's network is displayed in the network list on your smartphone. In principle you do not need to configure WiFi manually for the connection.



1) Open your network connections on your smartphone and tap enable camera network (BK16DAA-xxxxxxxxxxxx-xxxxxx)

2) Open the iWFCam app

3) The app indicates that the camera is online

4) A window opens saying to change password. You can now change your password or you can skip this step for now.

5) The live view of the camera is now displayed including all the possibilities related to operation

# 03 - Camera network - Manual connection 01

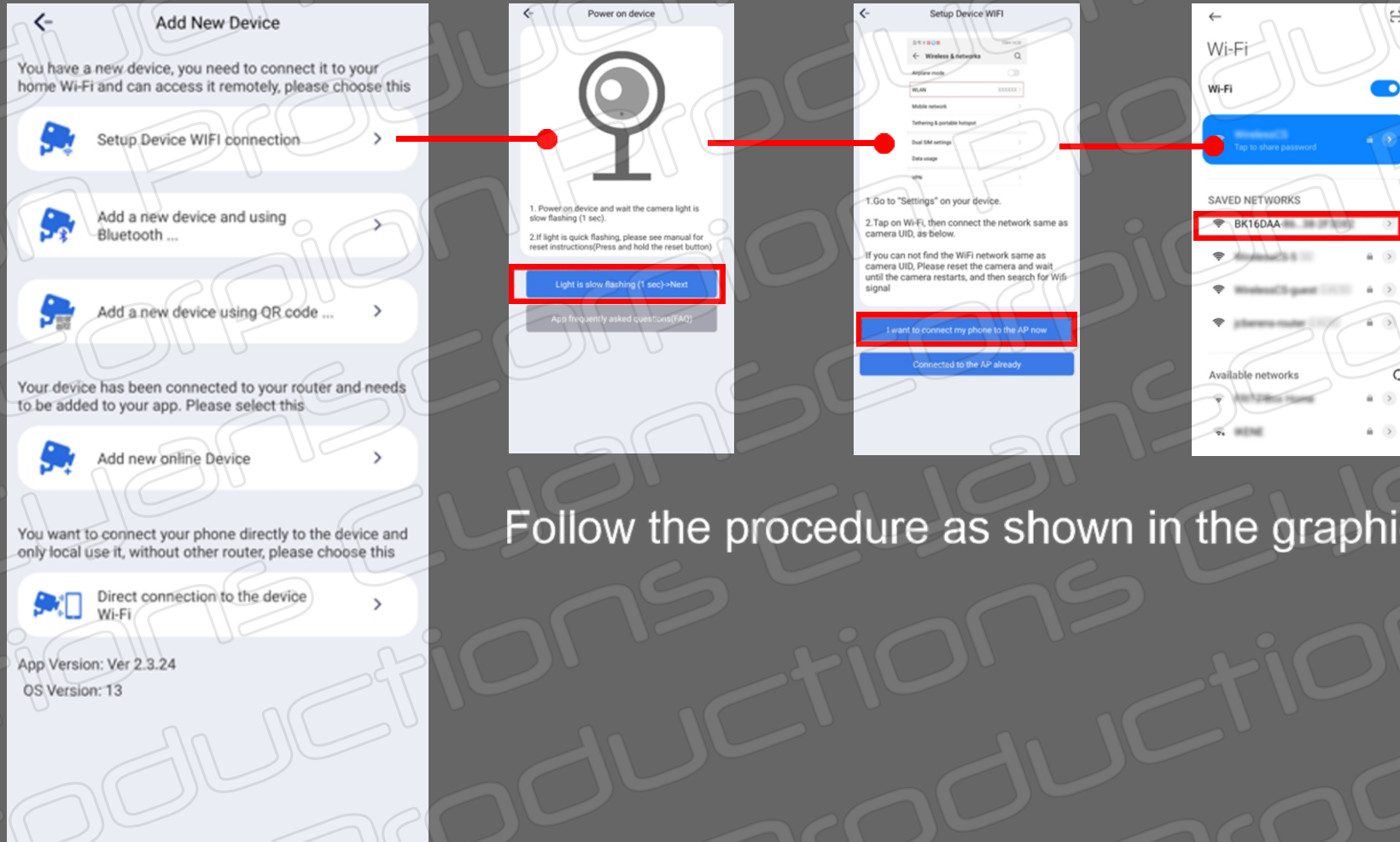


You may need to configure the camera manually. To do this, tap the '+' sign at the top right on the first page of the app to access the network menu. Some functions do not exist, such as bluetooth or you must first connect to the local network to be able to configure the network.

● Not available

# 03 - Camera network - Manual connection 02

## Setup device WiFi connection

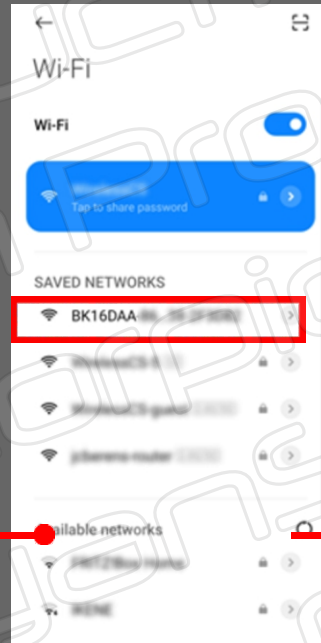
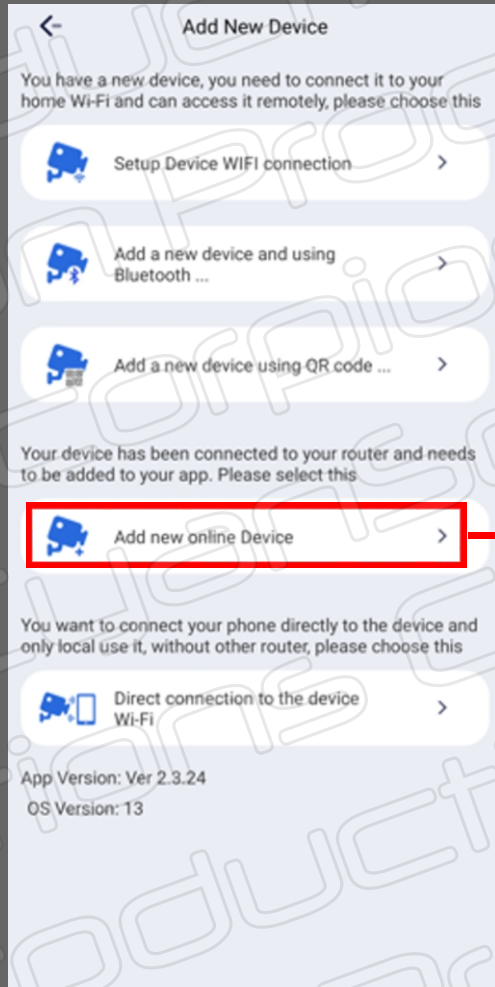


Follow the procedure as shown in the graphic

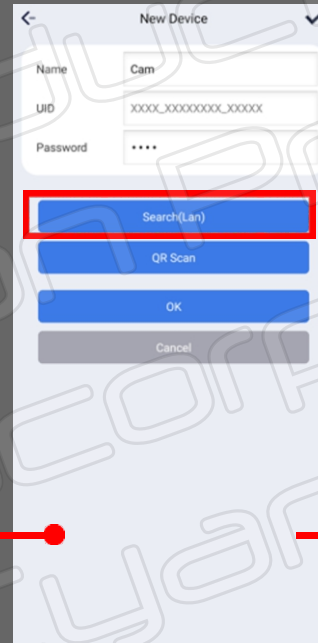


# 03 - Camera network - Manual connection 03

## Add a new device online using the search function



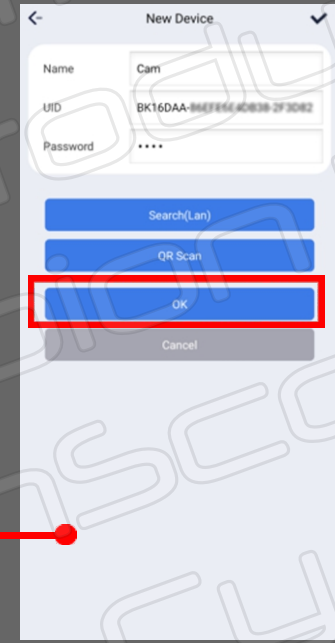
Open the camera's Wi-Fi



Select Search(Lan)



The camera is found.  
Tap on it

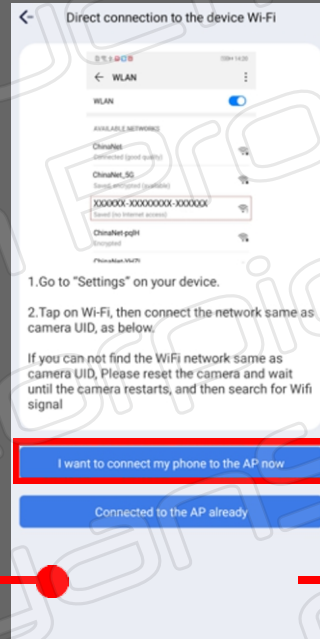
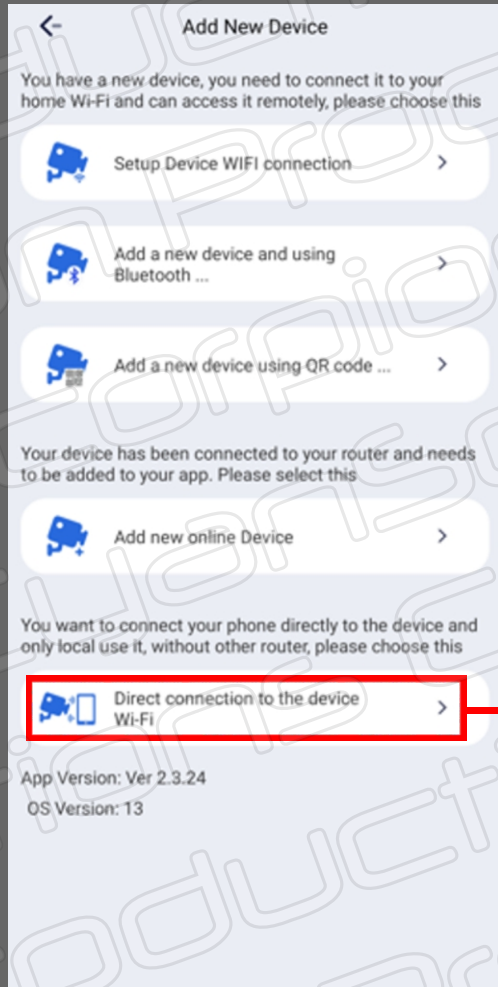


Validate with OK

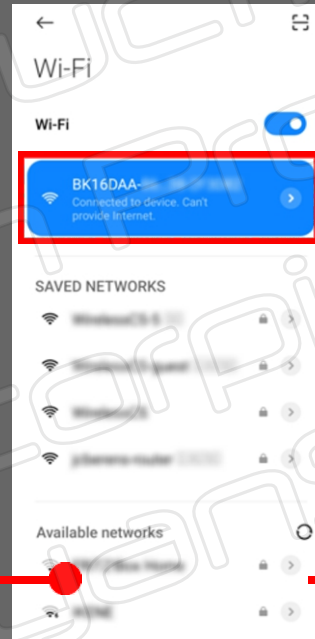
Follow the procedure as shown in the graphic

# 03 - Camera network - Manual connection 04

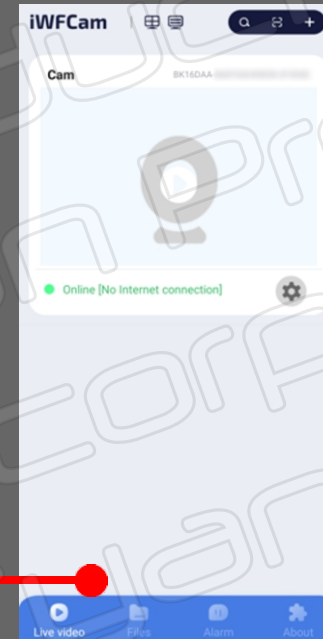
## Direct connection



Select I want to connect my phone to the AP now



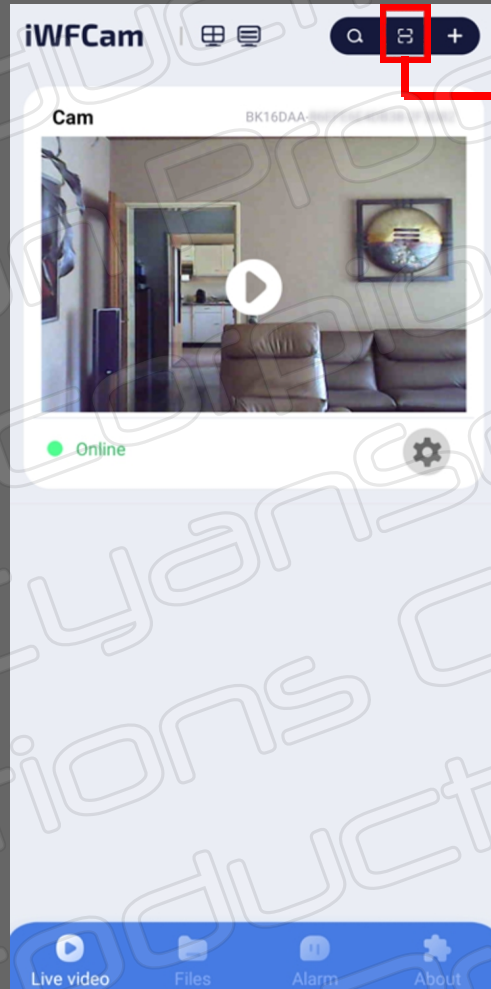
Select the camera's network



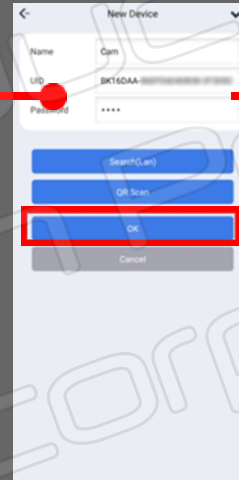
The camera is active

Follow the procedure as shown in the graphic

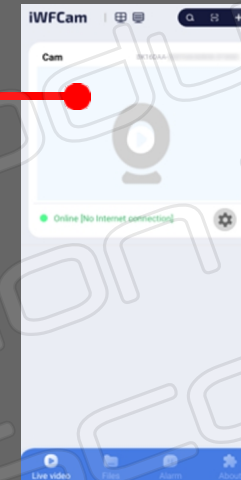
# 03 - Camera network - Scanning QR code



Scan QR code  
on the back  
of the camera



Tap OK

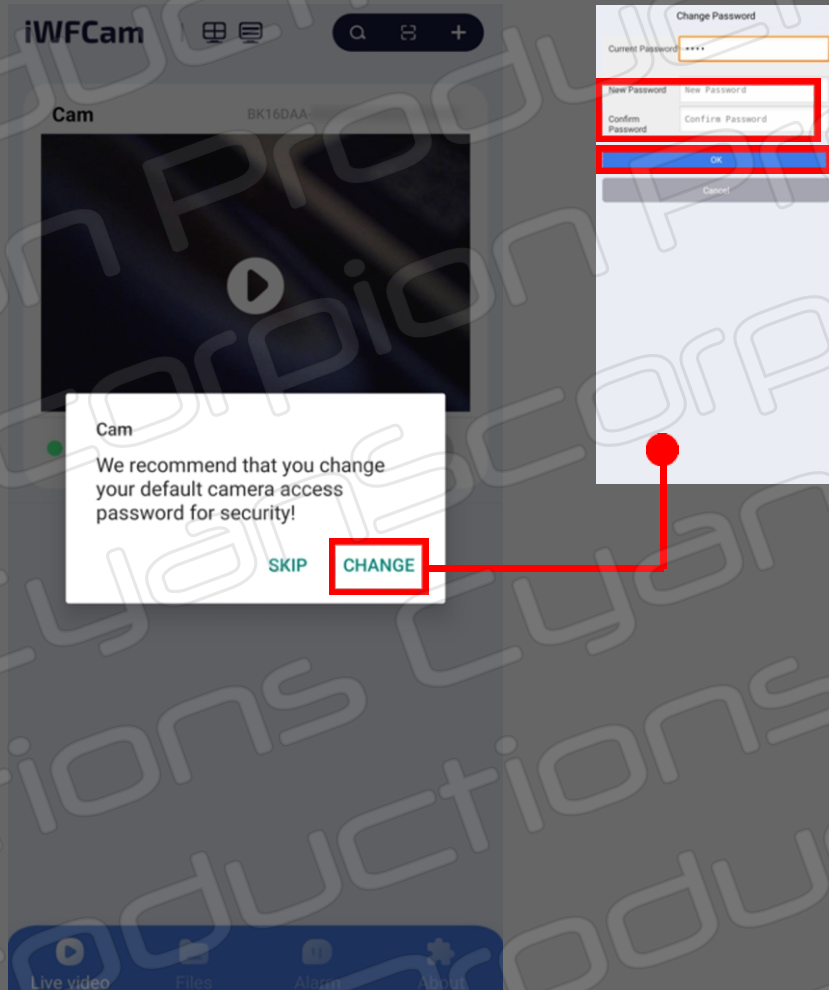


The camera is online

Follow the procedure as shown in the graphic

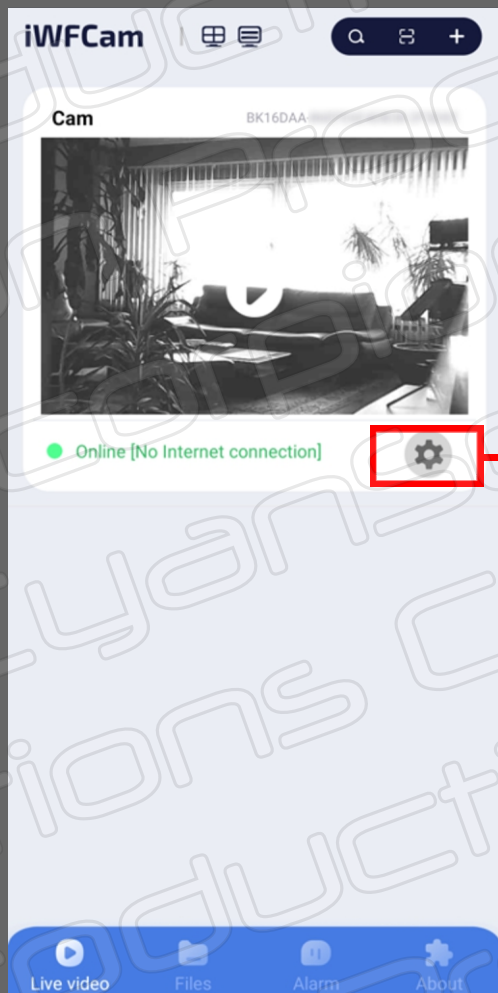


# 03 - Camera network - Password change

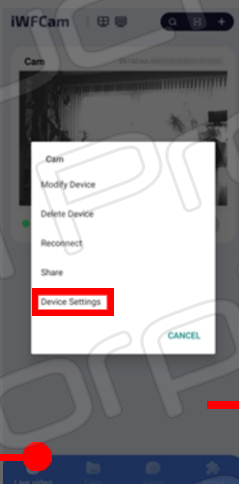


When you log in to the camera for the first time, the app will prompt you to change your password. Tap Change. Enter a new password and confirm. Tap OK. The new password will be saved for the camera network. **Do not change the current password!** If you forget the new password, no problem: reset your camera. Turn off the camera. Remove camera's WiFi from your smartphone. Reconnect the camera and the original password will be active again. Note that I haven't found any indication for the original password anywhere.

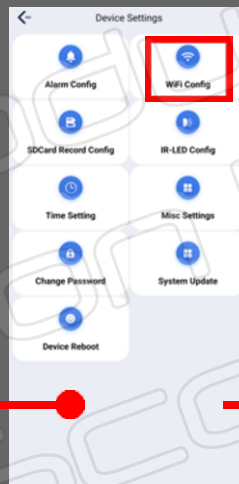
# 03 - Camera network - Local network connection



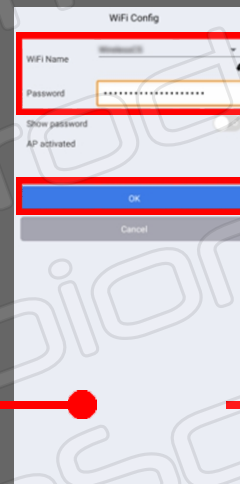
Tap on the settings icon



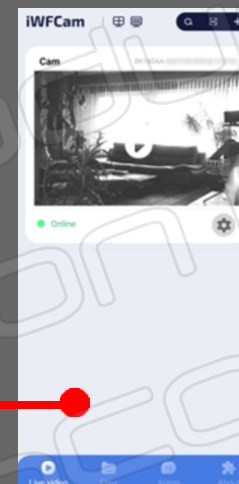
Tap on  
device settings



Tap on  
WiFi Config



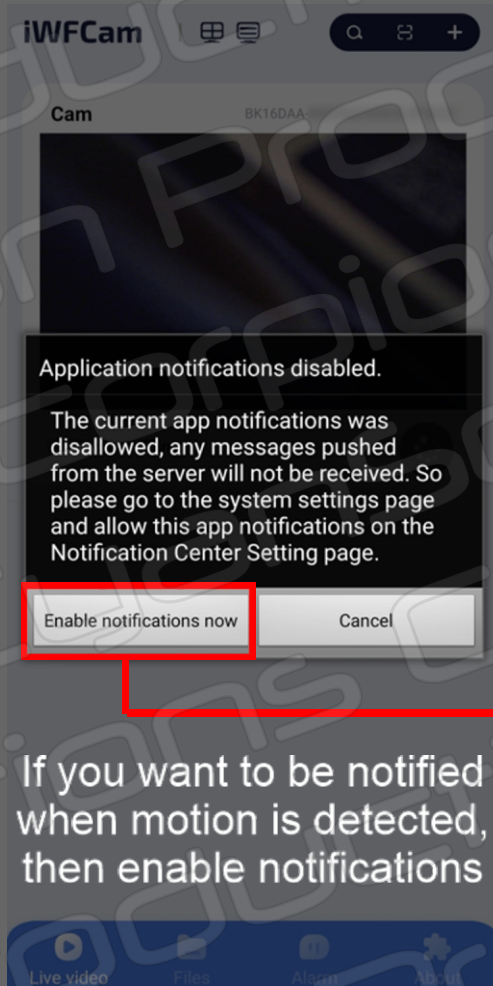
Enter your local  
network name  
(must be a 2.4 Ghz network)  
and the corresponding Password  
Tap OK



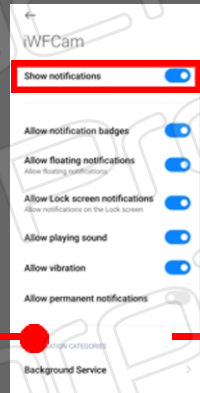
The camera will restart  
and you will now be  
automatically connected  
to your local network

Note that cloud service is only available when the camera is connected to the local network

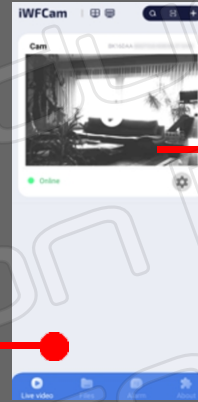
# 04 - Camera functions - 01 connection



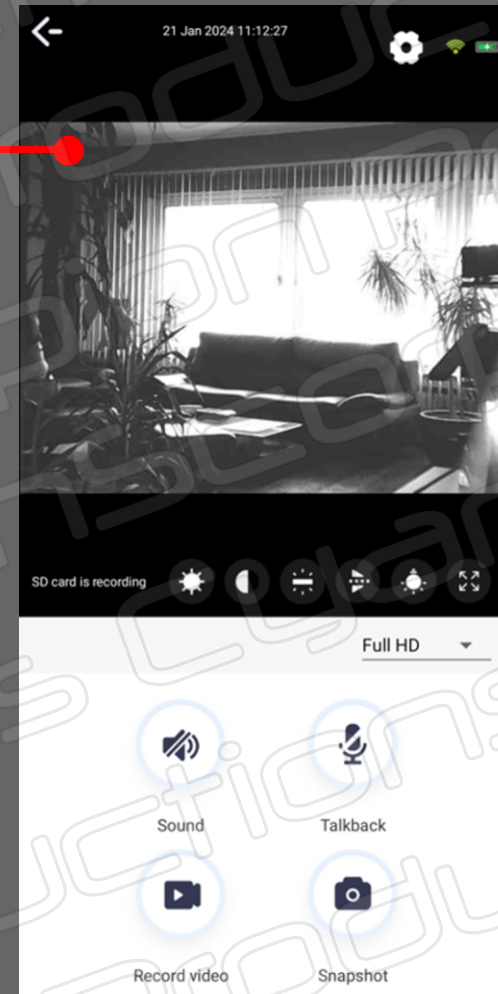
If you want to be notified when motion is detected, then enable notifications



Activate  
Show notifications




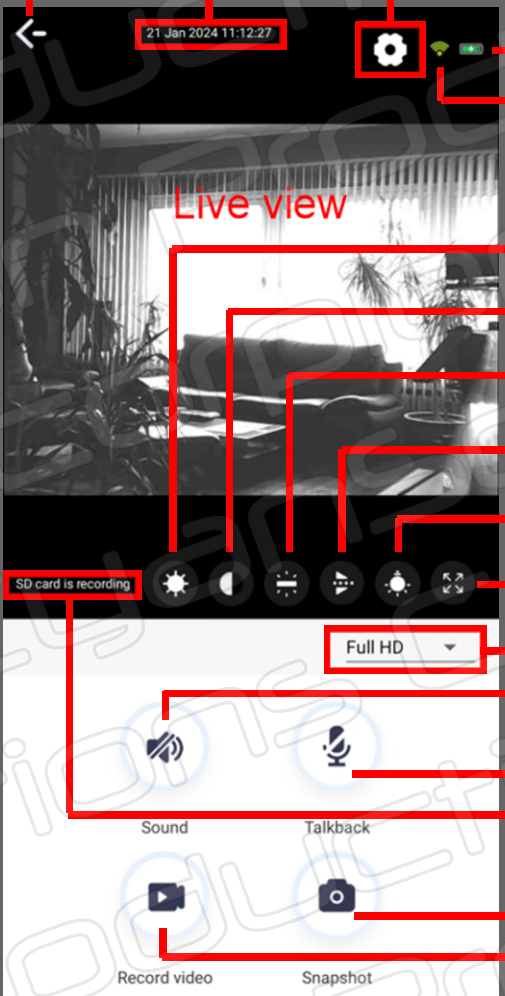
Tap for  
Live view





# 04 - Camera functions - 02 icons

Back   Current date and time   Settings - Note: this sign  appears when you are connected directly to your smartphone (AP). You can use it to establish a connection to your local network



Power source level  
WiFi strength

Live view

Brightness  
Contrast  
Camera LED on/off  
Upside down  
On/Off IR LED's

SD card is recording

Full screen

Resolution change Full HD, HD, Normal  
On/Off sound transmit and record

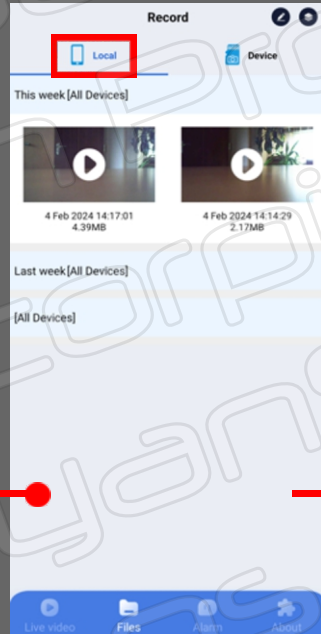
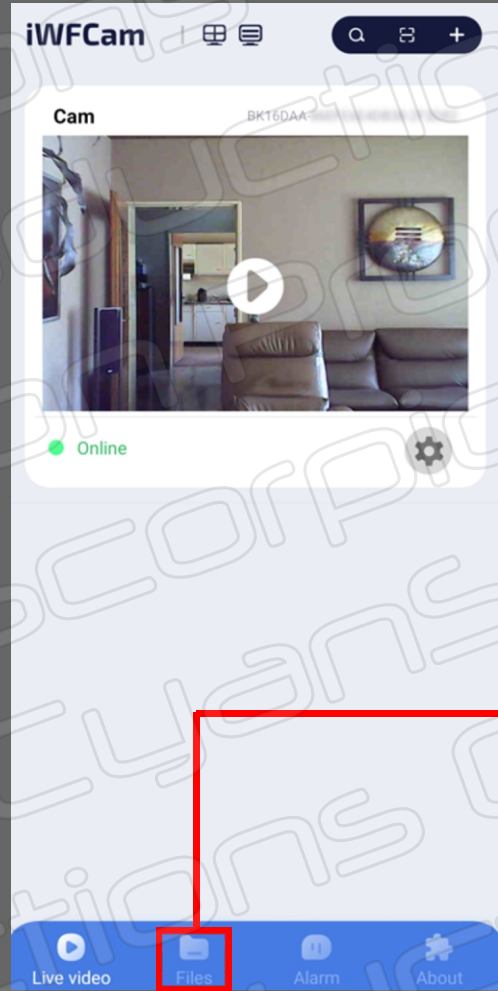
Intercom not applicable  
By default the camera starts recording continuously immediately after being plugged in  
You can change this function in the SD-card settings

Tap to take a photo  
Manual video recording. Tap to record. Tap again to stop

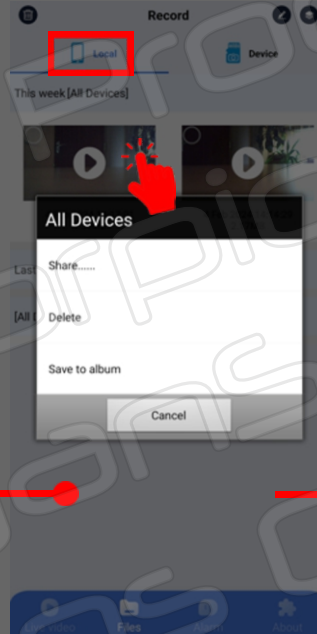
Sound   Talkback

Record video   Snapshot

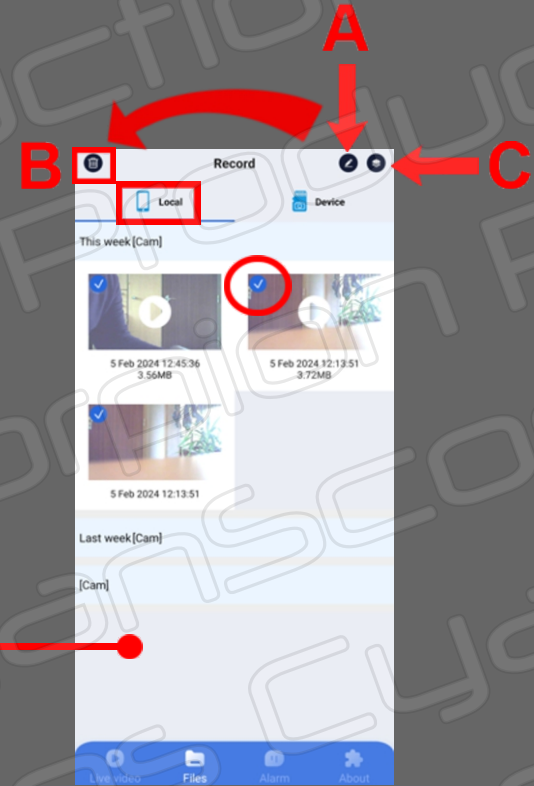
# 05 - Files (local storage)



Manually recorded files are stored locally on your device

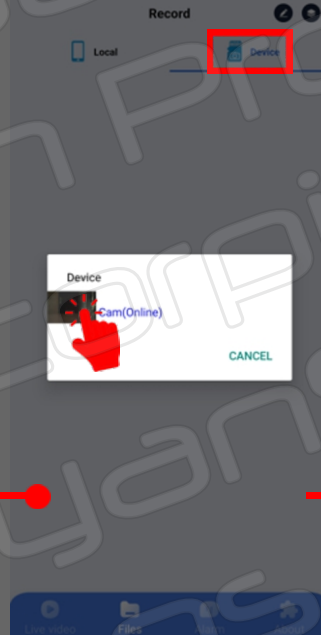
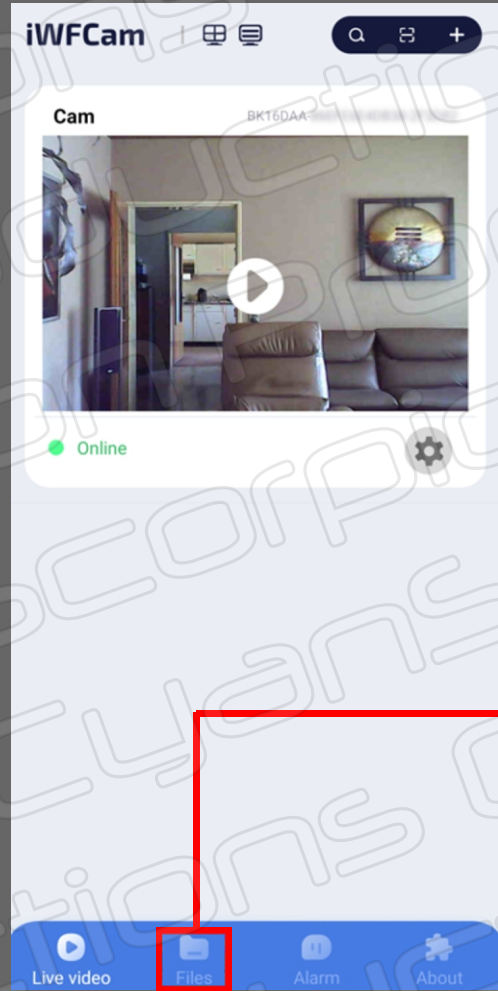


By pushing 1-2 seconds on one of the videos, a window opens that allows you to share, delete or transfer the video to your album



From the edit icon (A) you can choose one or more photos to delete (B). This icon (C) allows you to choose a specific album

# 05 - Files (SD card storage)



Select and tap the corresponding device



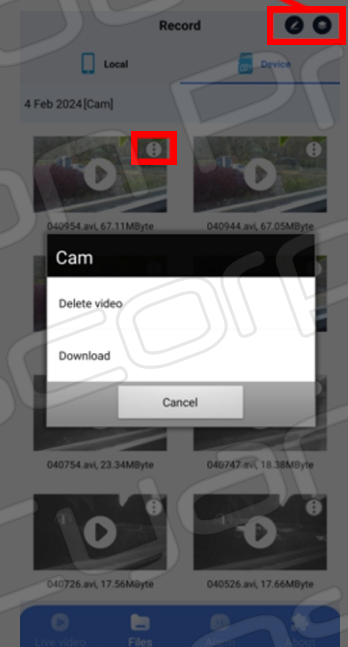
All the 'Alarm' triggered videos are stored on the micro-SD card

Back



Choose one of the videos and tap on it to play it

Same functions as for the local storage



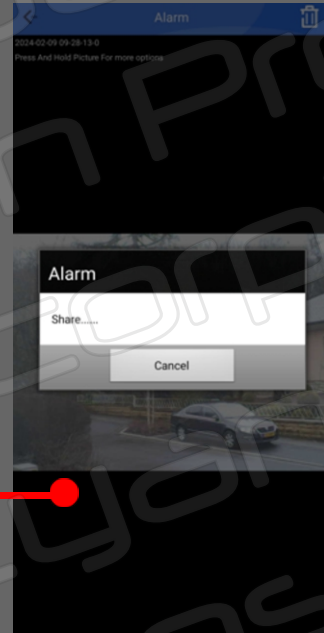
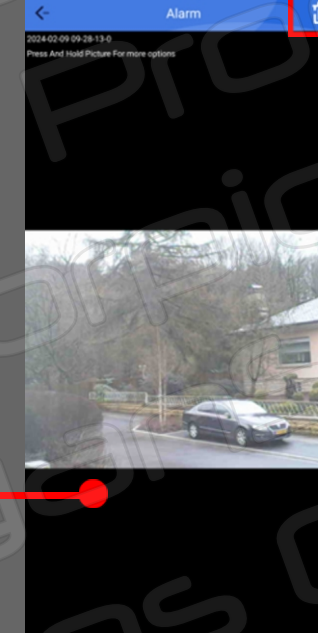
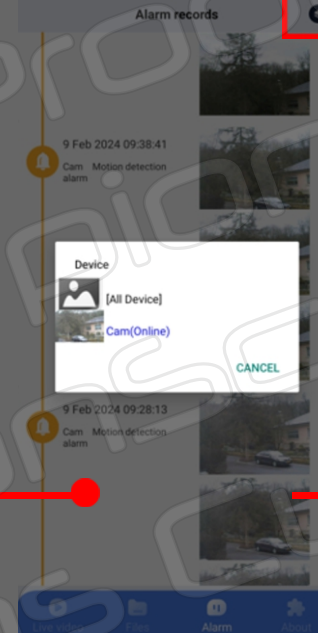
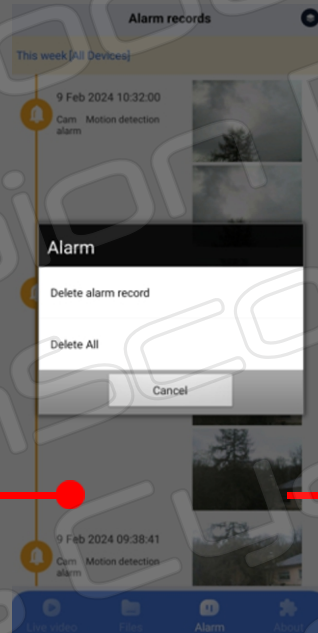
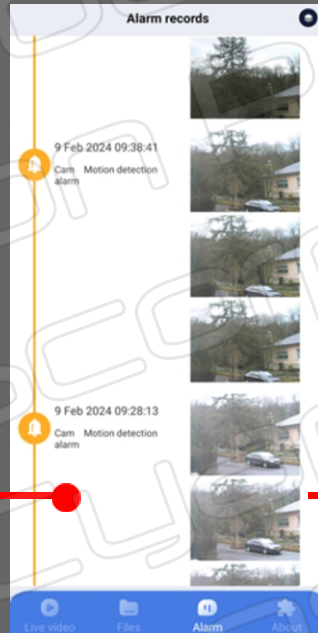
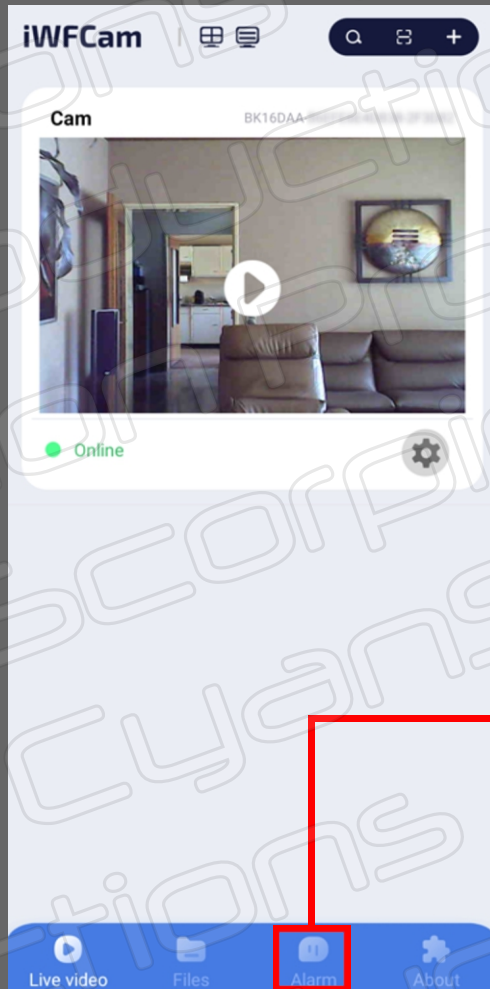
When you press the three dots, you can either delete the video or download it to your smartphone album. Be patient, it takes some time

Progress is visible in local storage



# 05 - Files (local image storage)

Images like video have a resolution of only 640x480 pixels. For each image alarm, a video is produced. This makes searching easier. They are stored internally on your device. To be able to work with them, you must transfer them using the sharing option



The 'Alarm' window registers up to 3 snapshots of a each movement detection

Push 1-2 seconds on the image and a window opens allowing you to delete the image(s)

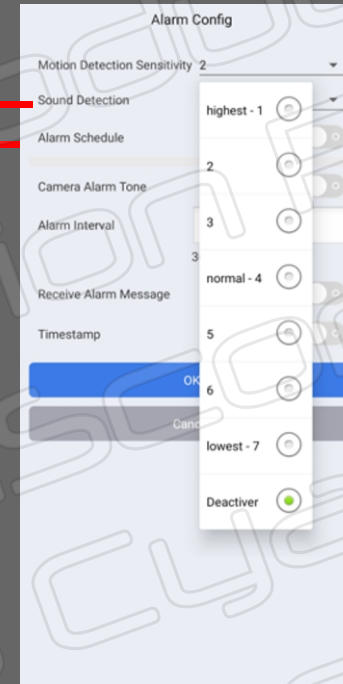
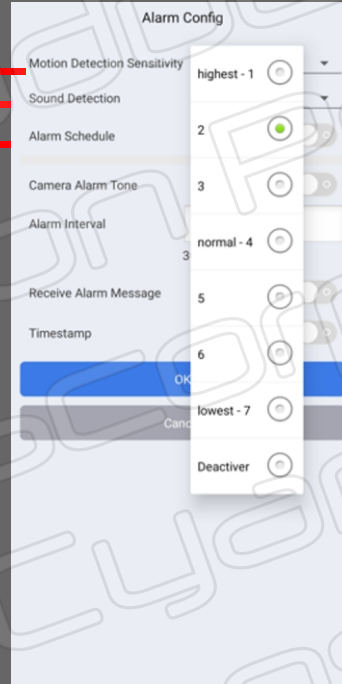
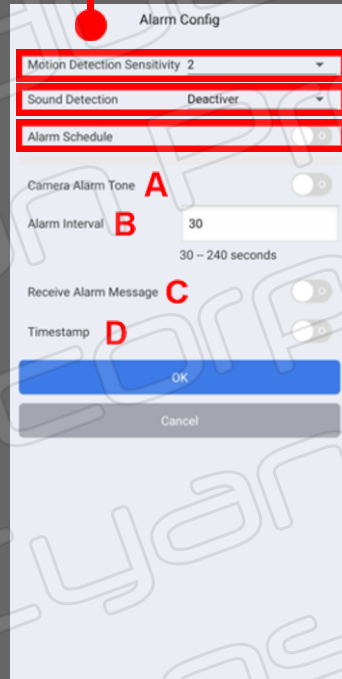
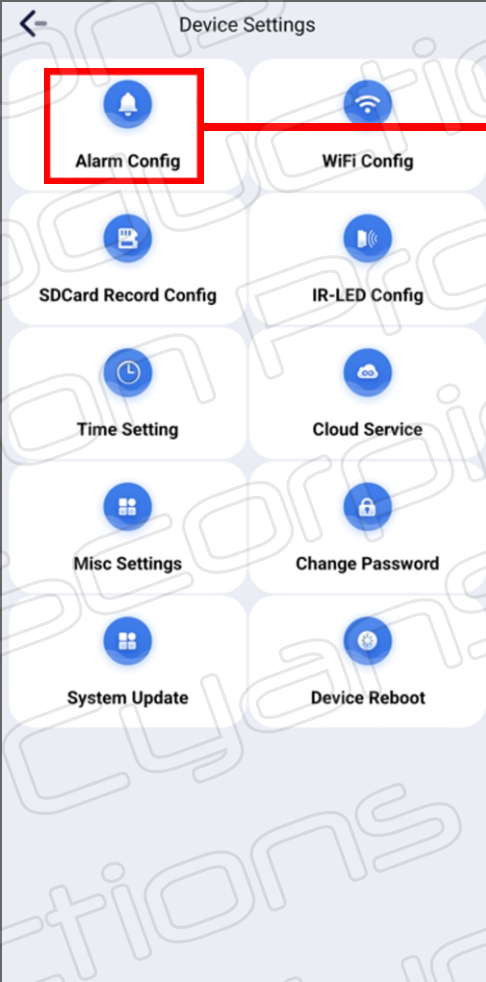
If several cameras are managed with the app, you can then choose the one that interests you

Tap on one of the images. you can either delete it or

Push 1-2 seconds on the image and a window opens allowing you to share the image

# 06 - Settings - Alarm

Don't forget to validate your changes with 'OK' before leaving the menu



When enabled, sets the range the camera should detect motion

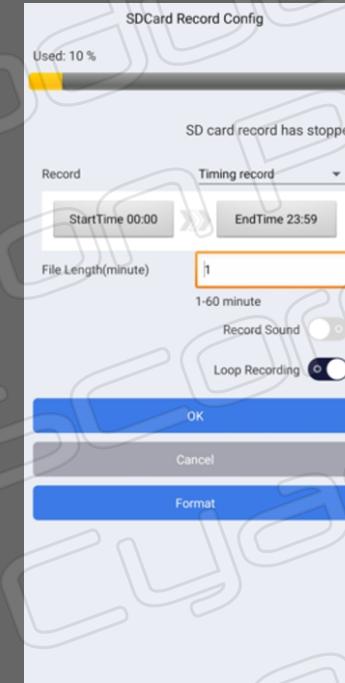
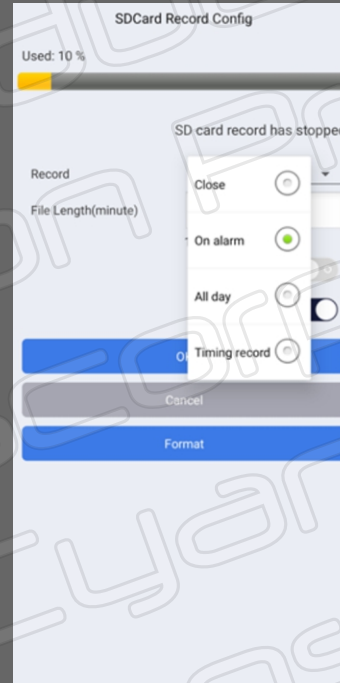
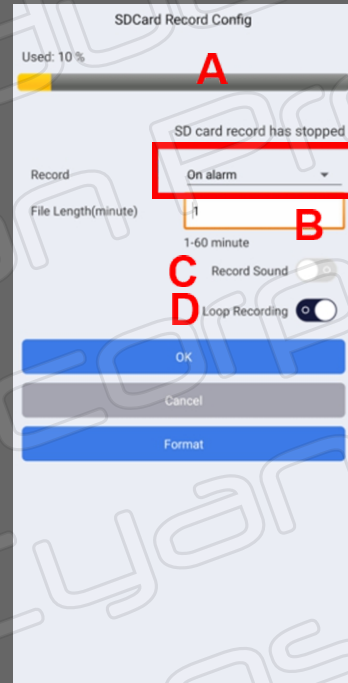
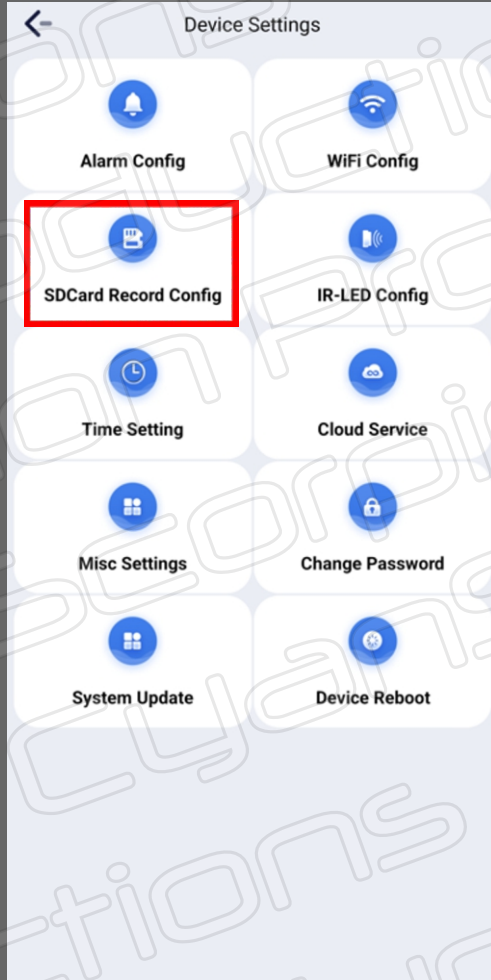
- A) Not active
- B) Motion detection reset interval
- C) Notification when an alarm is triggered. Notifications for the application must be activated beforehand

This option allows you to define the detection sensitivity (+3 to +2) are good values

This option allows you to record motion detection when the camera detects sound. I do not suggest using this function

# 06 - Settings - SD card config

Don't forget to validate your changes with 'OK' before leaving the menu



- A) Card memory used
- B) Recording length of each video sequence
- C) Sound recording (for detection, I don't suggest recording sound)
- D) Loop recording : when the card is full, overwrites the oldest file

Here we define the recording mod

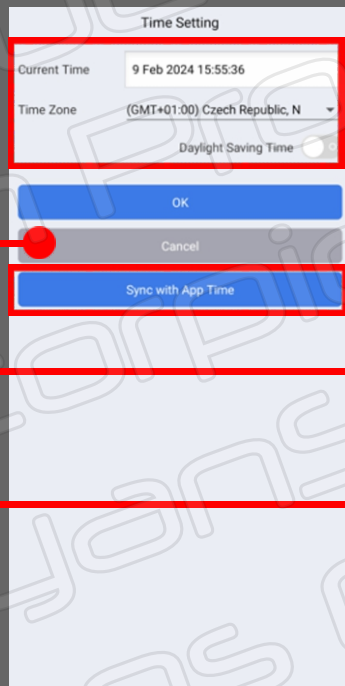
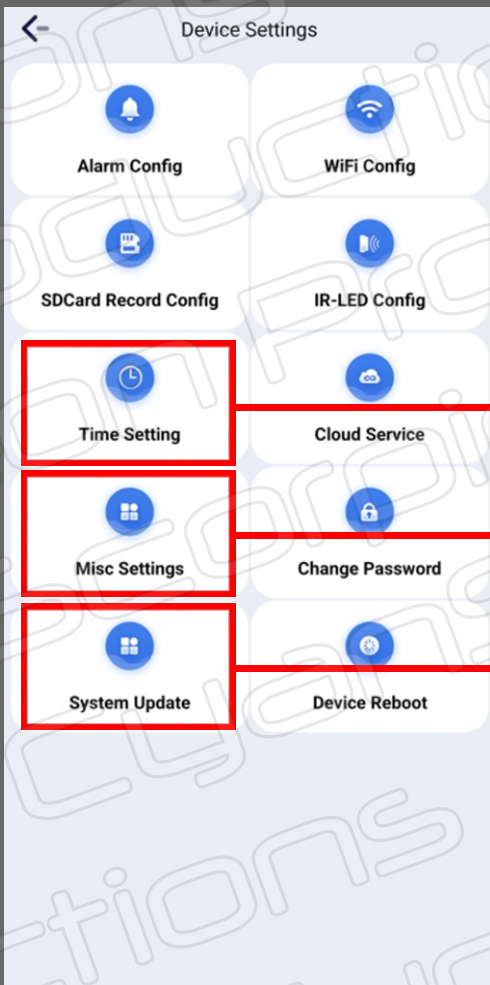
- 1) Close = no recording
- 2) On alarm = only if an alarm is triggered
- 3) All day = The camera records all the time
- 4) Timing record = records only at a defined time range

When 'Timing record' is chosen you have the possibility to enter a time range

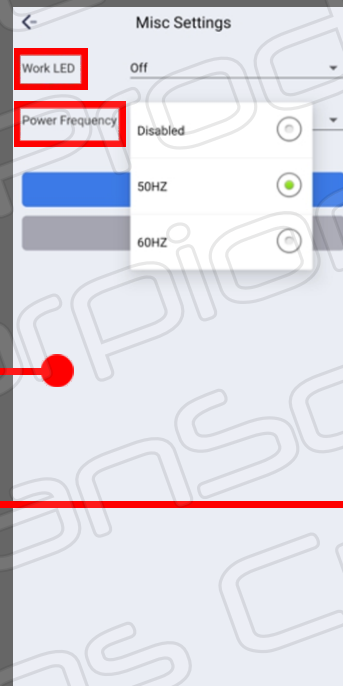


# 06 - Settings - Time-Misc-System

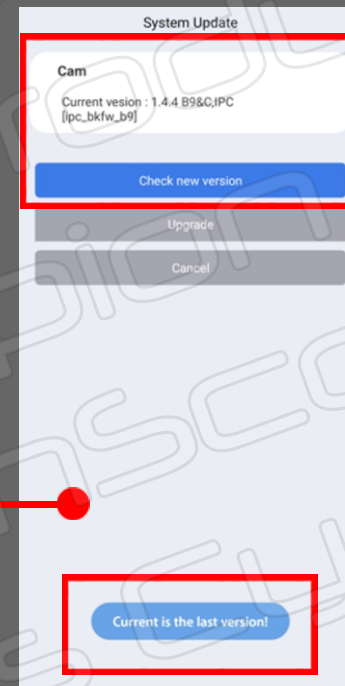
Don't forget to validate your changes with 'OK' before leaving the menu



Here you can configure the local date and time. It is also possible to synchronize the date and time directly with your smartphone



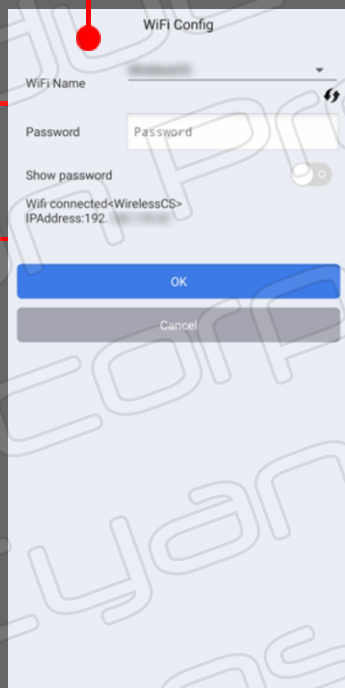
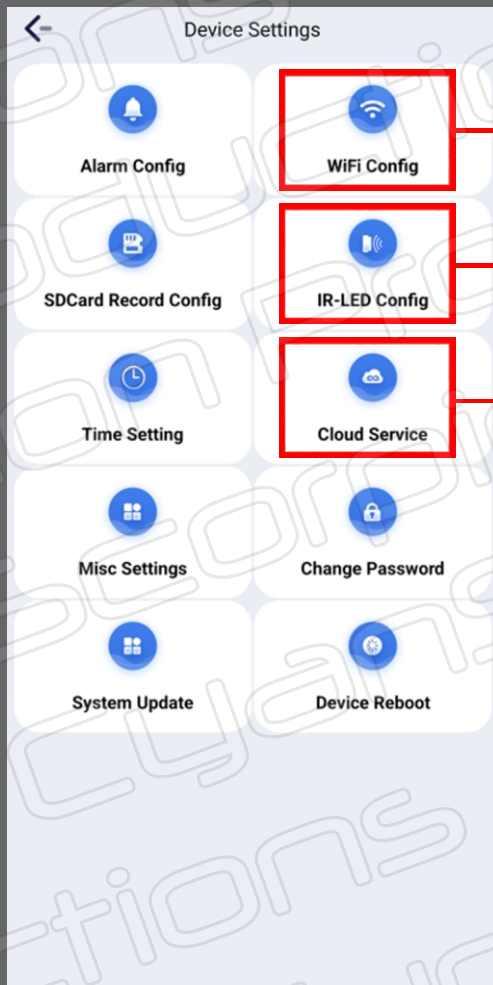
You can enable or disable the LED on your camera. Here you also define the frequency of your local electricity network



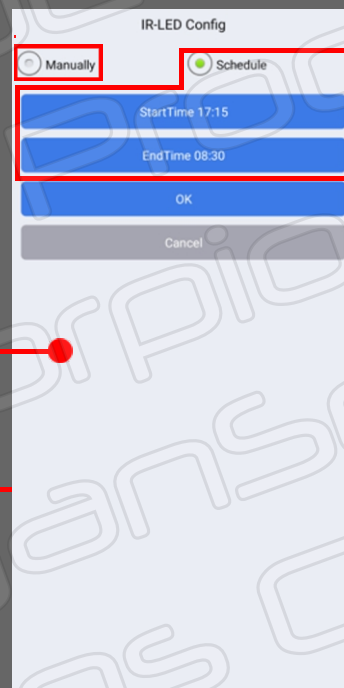
The system version can be checked and an update can be done on this screen

# 06 - Settings - WiFi-IR LEDs-Cloud

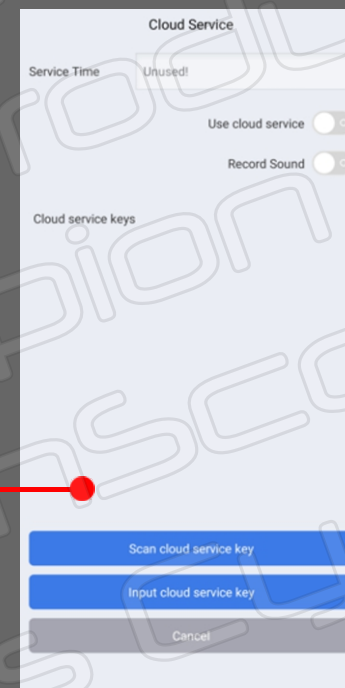
Don't forget to validate your changes with 'OK' before leaving the menu



Local network: please see network configuration



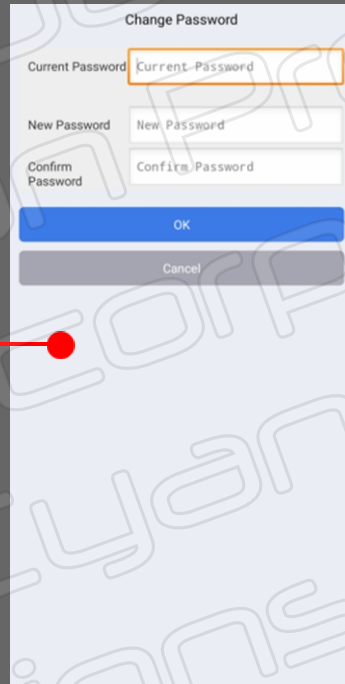
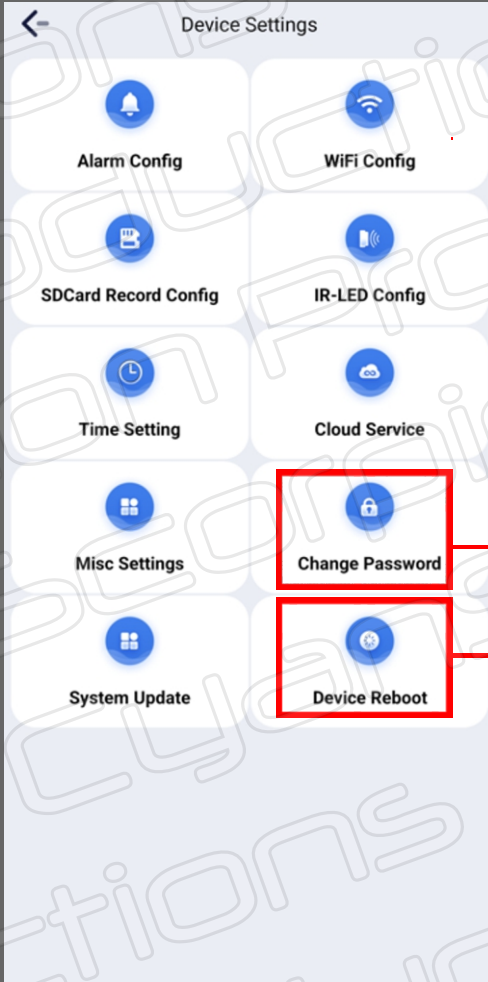
IR LEDs can be turned on/off manually from the dashboard or by setting a time range. The camera does not manage IR LEDs automatically



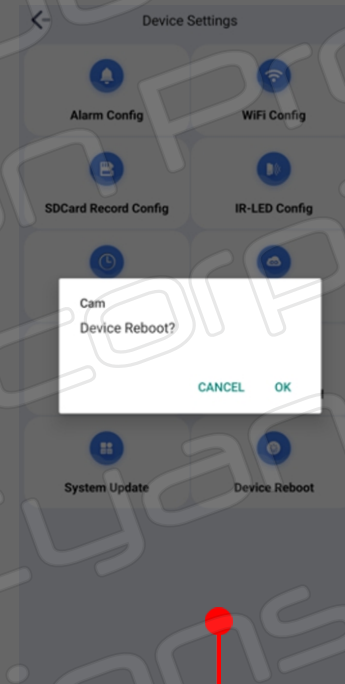
I don't know if there is a cloud service at iWFCam. You probably need to join an external cloud to be able to use this feature.

# 06 - Settings - Password-Reboot

Don't forget to validate your changes with 'OK' before leaving the menu



Password setting is explained earlier in this manual. If by bad luck you have to re-enter your password and you have forgotten it, you must start the WiFi configuration of the camera from the beginning. To do this, first clear the app cache. If necessary, delete the camera's network name from the list of networks



This function only restarts the camera